
K *The Kiwanis Club of Abilene* **KIWANIGRAM**



Vol. LIX

July 22, 2009

No. 41

ARCHAIC LAWS STILL ON THE BOOKS AND OTHER HUMOR IN THE JUSTICE SYSTEM JUDGE THOMAS WHEELER

**Noon, Wednesday, July 22
Abilene Country Club**

Judge Thomas Wheeler serves Taylor County as the Presiding Judge of the 350th District Court. An Abilene native, he graduated from McMurry University before attending SMU School of Law in Dallas. He was licensed to practice law by the State Bar of Texas in 1983.

Until his election to the 350th District Court, he practiced law in Abilene. He also served on the local grievance committee, which investigated complaints against attorneys in this area.

Judge Wheeler will present a program on curious statutes that are still in effect. Judge Wheeler may also share personal stories of some of the stranger moments he has witnessed in the Courtroom. The names will be changed to protect the guilty!

Bring a guest or potential new member so they may see how informative and entertaining our weekly meetings can be.



John Clark in full gear.

ABILENE POLICE DEPARTMENT S.W.A.T. JOHN CLARK, and AG SCHOLARSHIP PRESENTATIONS, GARY BOMAR, July 15

President **Randy Williams** presided. **Ken Poynor** led the prayer, **Mark Young** led the singing. **Millie Braddy** played piano. **Doris Armstrong** led the Pledge of Allegiance. **Mark Hoover** introduced our guests.

Jim Berry introduced John Clark who is on the S.W.A.T. team with the Abilene Police Department. John, who has been in Law Enforcement a total of 18 years, 14 of those in Abilene and 7 of the 14 with the S.W.A.T. team.

John gave an excellent presentation explaining that the Abilene S.W.A.T. team serves a 19 county region. Areas of responsibility include barricades, hostage or sniper situations, high risk arrests or warrants, riots, terrorist situations, and VIP protection.

He discussed various teams and the role of each team and took time to "gear up" to demonstrate equipment used, which weighed approximately 70 pounds! This was a very interesting program and it was evident those present enjoyed the presentation.

Mark thanked John for sharing and explained that a donation would be made to the Kiwanis Club Foundation for scholarships in his honor.

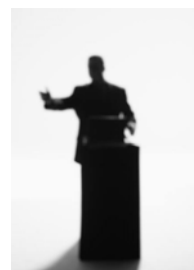
Gary Bomar, assisted by **Royce Manning**, presented 4 Ag Scholarships in the amount of \$500.00 each to the following students: Breanna Dudley from Merkel, Kelsey Marsh from Jim Ned, Rebecca Burson from Jim Ned, and Trevor Terrell from Wylie.

Scholarships for these students were made possible through a combined effort between the Kiwanis Club of Abilene and Kiwanis Club Key City.



FUTURE PROGRAMS

- July 29 -** Teen Challenge – Putting Youth Back on Track through Discipline, Chris Jones
- August 05 –** Tommy O'Brian, City of Abilene: Cedar Ridge and Water Development for Abilene's future
- August 12 –** Dr. Thomas Kim, McMurry University: Korea from the Beginning
- August 19 –** High School Football Coaches: Are ya ready for some football?
- August 26 –** Jamison/Triest, Musci Duo: Folk/acoustic music; guitar/voice.



PRAYER REQUESTS

Pray for **Clarence Presswood** who is improving. Pray for **J.C. McCurdy's** wife, Arlene. Pray for **Bill Zavatson's** son, Michael. Pray for Earlene and **Billy Clay**, who have moved to Royal Estates. Also continue to pray for Ruby Coke. Pray for Dennis Tarrant at First Financial Bank, who underwent surgery for colon cancer.

Spiritual Aims Message: "God is Faithful"

We always look for institutions, people, or systems that are dependable and can be entrusted with our work, money, family and future. Israel, in their best days, depended on God whom they called the God of Abraham, Isaac, and Jacob. God who had been dependable in the past could be trusted to act the same way in our time. Do we have that same confidence today and can we celebrate God's care as they did?

"Make a joyful noise to the Lord, All the lands! Serve the Lord with gladness! Come into His presence with singing! Know that the Lord is God! It is He that made us, and we are His, we are His people, and the sheep of His pasture. Enter His gates with thanksgiving, and His courts with praise! Give thanks to Him, bless His name! For the Lord is good; His steadfast love endures for ever, and His faithfulness to all generations." Psalm 100

Calling Kiwanians to ACTION for the new Aktion Club at Abilene State School! **John Thomas**, Chair and single member of the Aktion Club Committee, is in need of volunteers to help get organized. Requirements for the positions: Open minds, lots of patience, and willingness to get involved. Contact John for details. Plans are to kick off the new club in October 2009.

Cup Money - \$30.49



Brag Basket - \$10.00

BIRTHDAYS

July 26 **Lora Lynn Christensen**
July 27 **Mark Hoover**
July 29 **John Snapp**



INTERCLUBS

Key City Club
Monday, July 13
Keith Garner
Jeff Goodin
Mac Sipe
John Snapp
Shelia Watts
Bill Zavatson

Greater Abilene
Thursday, July 16
Chris Carnohan
Kristen Carnohan
Clay Copeland
Keith Garner
Clinton Nix

Round Table
Friday, July 17
Tom Aguilar
Leonard Brock
Keith Garner
Don Riddle

This brings our total interclubs to **84** for the 2008-2009 Kiwanis year, with **96** individuals participating in at least one interclub.



KIWANIS FACES: **Jim Berry** introduced the program. **Mark Hoover** introduced the guests. **Ken Poyner** led the opening prayer. **Mark Young** led the singing. **Randy Williams** presided at this week's meeting. **Gary Bomar** introduced the Ag Committee scholarship winners.

Hendrick Children's Hospital Wing Goal \$50,000

48 MEMBERS PLEDGING TO THE HENDRICK CHILDREN'S HOSPITAL CAMPAIGN

**Approximate Money Pledged to Date
Shootout 2009**

Addl Shootout Funds 2009

Amount Collected to Date

Amount Needed to Meet \$50,000 Goal

Still Needed to Reach Goal



\$19,200.00
\$2,500.00
\$3,975.48
\$21,425.35
\$28,574.65
\$26,883.00

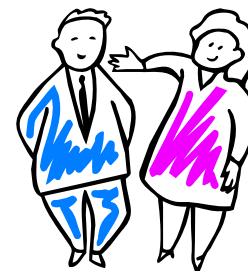
RECENT GUESTS – July 15, 2009

GUEST

GUEST OF

Donavan Henderson
Tom South
Sabrina Sabo
Carl Brown
Ike Taylor

James Hallmark
Greater Abilene
Greater Abilene
Greater Abilene



Additional guests introduced by Gary Bomar:

Tammy Dudley, J.T. Naron, Kelly Naron, Justin Richey, Breanna Dudley, Elaine Wiggins, Kelsey Marsh, Rebecca Burson, Marc Burson, Carol Burson, Marshall Eaton, Trevor Terrell and Mitch Terrell.

NEW MEMBERS

Tara Castille	6/24/09	Marty Anderson
Robert Pollan	5/20/09	Russell Berry/Dennis Laster
Jerry Zikmund	4/22/09	LuGene Lewis
Nelson Sparks	4/15/09	LuGene Lewis
Brice West	4/15/09	Guinn Smith
Cassie Santiago	4/08/09	Bobbie Wolfe



Royce Manning with Ag Scholarship Winners: Kelsey Marsh - Jim Ned High School, Breanna Dudley - Merkel High School, Trevor Terrell - Wylie High School, Rebecca Burson - Jim Ned High School

Today was **J.C. McCurdy's** 92nd birthday. J.C. wrote the following which was shared with the club:

"At 3:30 pm today, I will have lived 92 years. At the age of 40, A.L. Frazier inducted me into the Kiwanis club of Abilene on the last Wednesday in October, 1957. I have had the privilege of serving the kids in Abilene for over 50 years being guided by the leadership of this club. At the end of July, I will have 51 ½ years of perfect attendance accomplished by your leadership."
Happy Birthday J.C.!

ANNOUNCEMENTS & NOTES

- ✚ **The 2009 TX-OK Convention** is being hosted by the Kiwanis Club of Rockwall, Texas, August 6th through August 9th.
- ✚ **Celebration Tuesday** – September 29!
- ✚ **Gary Bomar** announced the upcoming Texas State 4-H Horse Show at the Taylor County Expo Center July 25th and 26th. **LOTS** of Gate Keepers are needed. Sign-up sheets will be on the tables next week or volunteers can go to <http://taylor-tx.tamu.edu/> web site. Click on the link that says '['09 State 4-H Horse Show Volunt](#).'
- ✚ It's time to begin thinking about leadership roles for 2009-2010. Contact **Mark Young** if you have a desire to chair a committee.

2008-2009 OFFICERS

Russell Berry	President	Mark Young	President-Elect
Jamie Breed	Vice-President	Ricki Brown	Treasurer/Foundation Treasurer
Randy Williams	Vice President	Faye Dodson	Secretary
Charles Kirkpatrick	Vice President	Henry McGinty	Assistant Secretary
Carl Lockett	Immediate Past-President		

2008-2009 DIRECTORS

TWO YEARS

Ty Purcell	Mac Sipe
Shirley Velasco	Kelly Jones
Mark Hoover	

ONE YEAR

Sharon Jones	Dick Kincaid
Jerry Carter	John Thomas
Lora Lynn Christensen	

The Kiwanis Club of Abilene Chartered - May 25, 1921

473 Cypress Street, Suite 107, Abilene, Texas 79601
 Telephone/Fax: 325-673-1341
 Editor: John Thomas, john@cgspage.com
 Email: Kiwanis@AbileneKiwanis.org
 Website: www.abilenekiwanis.org

KIWANIS IS WHERE A NEED IS Served