

Briarstone Manor is located at: 101 Eplens Court, Abilene, TX 79604 Meetings are every Wednesday at Noon

OUR NEXT PROGRAM

THE PIANO MAN

Piano Man Mike Schuler grew up in New York City, performed on the trumpet at Carnegie Hall when he was 13, with the U.S. Air Force Band out of high school, and then with the Hardin-Simmons University Cowboy Band.

He began playing piano around Abilene at Fairway Oaks (when they still had the PGA tournament), Crystal's Restaurant (when they still had the cave entrance), The Kiva Inn (when they still had "The Library" restaurant), The Abilene Club (when they were on top of the "M Bank" or "Bank One" building), and the Petroleum Club (when there was one). Through the years he has continued to perform at local venues such as the Abilene Country Club, Cahoots, Ruby's Chicken Dinner House, Cypress Street Station, ACU, HSU, The Mall of Abilene, and the Paramount Theatre. He has entertained thousands of school children over the years both in person and through "The Piano Man" television show which ran for 6 years on AISD cable channel 7 and has just recently returned to production.

Mike had traveled around the country and state of Texas quite a bit, also living in the Dallas/Fort Worth area as well as South Padre Island but he has always returned "home" to Abilene. Mike and his wife Andrea and their son, reside downtown at The Wooten, next door to his favorite place to play-The Paramount Theatre.

OPENING CEREMONY FOR 02/28/07

President Margaret Hoogstra presided over the meeting. **Ken Poynor** led the singing and **Millie Braddy** played the piano. **Ken Poynor** led the prayer; **Jerry Harris** led the pledge and **Carl Lockett** introduced the program.

WHAT A MEETING! March 7, 2007



**58th Annual
Kiwanis Club of Abilene
Pancake Day
Sponsored by IHOP**

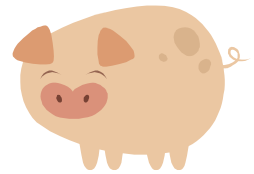


KICK OFF!

It was a happy day "Down on the Farm". Farmer Carl Lockett donned his overalls as members gathered together at Old McDonalds farm. Hired hand Kimberley Cole discussed this years Pancake Day ticket prices and hired hand Pamela McGrew announced this years ticket selling sales teams. There were three teams; the "PIGS" lead by Shirley Velasco, the "COWS" lead by Russell Berry and the "CHICKENS" lead by Jan Koflanovich.

The three team leaders gathered their animal friends into their pens for a quick photo opportunity and a chance to sing "Old McDonald had a Farm". The animals were all sent away from the farm for the week to entice the city folk of Abilene and beyond to buy tickets for Pancake Day. All farm hands and animals will continue to gather weekly to hear sales results!

This year's Pancake Day goal is over \$30,000.00!



REQUESTS PRAYER

Bud Coke.

Dorothy Dowell as she recuperates from knee surgery.

Nelda and Eric Wallace, Nelda will have surgery in Dallas on March 22nd.

Roy Lewis *** Billy Clay *** Donald McDonald's wife Becky *** Margaret Jolly ***

A.C. Johnson's son-in-law *** J. R. Velasco's mother Olivia Velasco *** Dick Kincaid's wife Joanne

*** John Thomas's son Joseph *** George Knight's wife Joan ***

To those not mentioned, our thoughts prayers are still with you.

SPIRITUAL AIMS MESSAGE- Cheer up!

The pastor preached a very short sermon one Sunday morning. He explained to his congregation, "My dog got into my office last night and chewed up some of my notes." At the close of the service, a visitor spoke to the Pastor as he left the church. "If your dog ever has puppies, please let my pastor have one of them!"

God intends for us to smile. Far more muscles are used when we frown than when we smile. So why overwork facial muscles? Laughter is as much a part of the heart of God as are tears.

If you are cheerful, you feel good; if you are sad, you hurt all over.

Proverbs 17:22 (CEV)

BIRTHDAYS-March

Kimberley Cole 14

David Bacon 19

PECANS

Wednesday's meeting was the last day for Pecan sales this year. All pecans that were not sold will be sold in the upcoming Pancake Day Silent Auction. Thank you to the many members that helped to sell and that bought so many bags of pecans.

RECOGNITION

President Margaret Hoogstra asked the clubs past Lt. Governor's to stand and be recognized. She then announced that the board had approved member Bill Hoogstra to be added to the list of nominees for the position of Lt. Governor for the 2008-2009 year. Congratulations Bill!

Luncheon Cup Money for March 7, 2007 was \$43.78

GUESTS FOR 03/07/07

Dennis Laster introduced the guests.

Kent Brown was the guest of Alan Eggleston.

Karri Leavenworth was the guest of Russell Leavenworth.

Carol Casey was the guest of Randy Williams.

Earlene Clay was the guest of Billy Clay.

Laurie Martin, John Fred Phillips, Richard Melton and Pete Hinman were guests from the Greater Club.

MEMBERSHIP

<u>New Member</u>	<u>Sponsor</u>	<u>Date</u>
Connie Stephens	Dub Pritchett	10/4/06
Dub Hawkins	Pamela McGrew	10/4/06
Bruce Benton	Van Boozer	10/11/06 (member since 08/30/06)
Faye Dodson	Kelly Jones	11/1/06
Bradley Campbell	David Bacon	11/1/06
Vicky Stout	Kenny Smith	12/20/06
Shirley Velasco	J. R. Velasco	2/14/07
Mike Jeter	Jerry Harris	2/28/07
Matt Smith	Donald McDonald	2/28/07

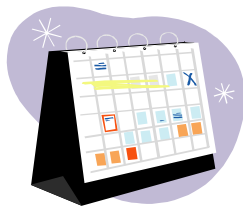
FUTURE PROGRAMS

3/21/07-Stomp Program

3/28/07-New Family Life Center with Randy Vorhees

4/04/07-Spiritual Aims-Easter

Programs are subject to change without notice.



KIWANIS' CALENDAR OF EVENTS

6/22/07-6/24/07-Hole in One Contest

7/02/07-7/06/07-International Conference-San Antonio, Texas

8/02/07-8/05/07-T/O District Conference-The Woodlands, Texas

THANK YOU

Dear Kiwanians,

Thank you for your generous gift of \$5,302.54 from the Basketball Shoot-Out event, which we received on March 1, 2007. Your continued support of Children's Miracle Network is greatly appreciated. You are making a difference in the life of a child. From state-of-the-art fetal monitors and the region's only Pediatric Intensive Care Unit, to tiny blood pressure cuffs for two-pound babies, Children's Miracle Network touches children of every age and from every walk of life.

Your commitment to our kids at Meek Children's Hospital and all other children's services at Hendrick is truly appreciated. Thanks for being a champion for kids in the Texas Midwest. It all comes back to you.

Sincerely,

Mark Rogers, CMN Coordinator

INTERCLUB-Key City Club-03/05/07

Donald McDonald, Shirley Velasco, J.R. Velasco, Bill Hoogstra

INTERCLUB-North Abilene-03/09/07

Keith Garner, Marcus Anderson, Jeff Goodin, Ken Poynor

SOMETHING ELSE

As discussed by President Margaret Hoogstra at this weeks meeting:

**Kiwanis Club of Abilene
Membership Survey – February 14, 2007**

Members who voted **against** the proposal
25 surveys filled out by folks who voted No.

Dues Increase – 18 votes

Move – 16 votes

Comments (verbatim):

1. I was not shown a compelling reason to move
2. Dues increase too big. Golf carts from Treadaway...NOT! Briarstone may be slow, but they did buy new carpet and chairs and fixed the door. We love the Briarstone Staff of sweet ladies.
3. Dues increase too much. Parking.
4. I like it here. Food is good.
5. Many other reasons.
6. Dues increase for those on retirement income. Parking. I am not unhappy with Briarstone Manor.
7. Would look again when club renovations are complete.
8. Parking and inconvenient location. No reason to move. OK here.
9. Country Club not a central location. Briarstone note as bad as directors tried to make it appear. Just a few unhappy with Briarstone, and they tried to railroad the change through.
10. I like the club here, especially the food.
11. Didn't have a problem with Briarstone and was concerned about dues increase and the parking situation at C. Club.
12. May be needed in the future, but not now.
13. (Country) Club image. Dues increase affects those on fixed income more than others. I believe Briarstone has made some efforts to improve.
14. Dues increase – Main reason.
15. I like Briarstone.
16. The Briarstone is more convenient and the food is great!
17. 25% increase in dues and parking at the Country Club.
18. There is nothing at the country club that I don't already have here! Personally, it would be wrong for me to change or move. If I were to move, it would be only to enhance my ego, prestige, and pride – to associate with the popular successful, wealthy—hoping that it will rub off on me – to increase my self-esteem_ (SO I voted NO!) (I make no apologies!) This move would be totally worldly!

Members who voted **for** the proposal
37 surveys filled out by folks who voted Yes.

Briarstone facilities and furniture – 30 votes

Briarstone food – 21 votes

Comments (verbatim):

1. Would be great for club growth – much needed change.
2. Apparent apathy from a rather absent management.
3. Why are we doing this?
4. I have become concerned about the cleanliness of the food preparation.
5. A good opportunity to grow our club membership.
6. Recommendation of Board of Directors.
7. Better location.
8. Lipstick on glasses.
9. To have better appeal for new members.
10. Make it more appealing to potential guests/members.
11. I am a new member, and not totally familiar with past issues, but the Country Club appears to be a right place to move to facilitate growth for our club – and a nicer facility to bring guests.
12. Just preferred meeting @ ACC (great food).
13. Potential for growth.
14. Longtime effort the better facilities would have on our club.
15. Better location for long-term growth of club, particularly to get younger members.
16. A move could possibly help with recruiting new members – it would give a fresh look to the club.
17. Country club closer to me plus food is excellent!
18. Reluctance to respond to requests for improvements.
19. An opportunity to attract new members.
20. Because of the facility, I have trouble bringing guests.
21. Possibility that Briarstone is being sold, uncertainty of its future existence.
22. Soundproofing is terrible.
23. Better for recruitment of new members.
24. Overall ambiance. Distance from office. Other facility conducive to bringing in new members.
25. Briarstone has long been deteriorating with little incentive to improve the quality.
26. Time to meet new potential members! “Change is always good!”

WHAT YOU SHOULD KNOW

2006-2007 OFFICERS

<i>Margaret Hoogstra</i>	<i>President</i>	<i>Carl Lockett</i>	<i>President-Elect</i>
<i>Lora Lynn Christensen</i>	<i>Vice-President</i>	<i>Ricki Brown</i>	<i>Treasurer/</i>
<i>Bruce Davis</i>	<i>Vice President</i>		<i>Foundation Treasurer</i>
<i>Guinn Smith</i>	<i>Vice President</i>	<i>Ty Purcell</i>	<i>Secretary</i>
<i>Gordon Dowell</i>	<i>Immediate Past-President</i>	<i>Henry McGinty</i>	<i>Assistant Secretary</i>

2005-2006 DIRECTORS

TWO YEARS

Charles Kirkpatrick
George Knight
LuGene Lewis
Pam McGrew
Kenny Smith

ONE YEAR

Russell Berry
Dennis Laster
Clinton Nix
Sheila Watts
Mark Young

The Kiwanis Club of Abilene

473 Cypress Street, Suite 107, Abilene, Texas 79601

Telephone/Fax: 325-673-1341

Administrative Assistant/Editor: Caroline Lee

Email: Kiwanis@AbileneKiwanis.org

KIWANIS IS WHERE A NEEED IS Served